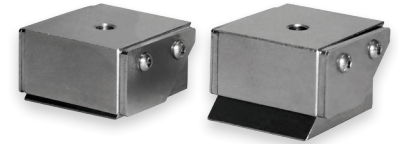


Accessories

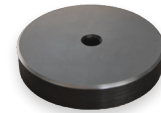
For Electropermanent Magnetic Chucks

Pole extensions are the ideal complement to the square and radial pole magnetic chucks. Workpieces of any structure can be clamped perfectly with Assfalg pole extensions. The mobile pole extensions adapt optimally to the workpiece contour. The workpiece is shimmed and lies stably on the extensions, for five-sided vibration- and distortion-free all-round machining. In addition, the surface of the magnetic clamping plate is protected against accidental damage caused, for example, by too deep milling and drilling. Another possible application is the use as a stop for e.g. 3D molds, round material and smaller workpieces.

The connection cables are available in different lengths. They connect the magnets to each other in series or several individual magnets to a distributor. The cables are protected against hot chips and cooling water. In case of non-encapsulated machine tools, additional cable protection is nevertheless recommended for wet processing.



P50M or P75M on extension compressed (left) and expanded (right)



P75FR-15



P50FR or P75R



Connecting cable

Technical Data	Pole size	Dimensions	Version	No.
Pole extensions [Typ]	[mm]	[mm]		
P50FR-15	50	Ø50 x 15	fest	74419
P50FR	50	Ø50 x 32	fest	61262
P50M	50	50 x 50 x 32	beweglich	68980
P75FR-15	75	Ø75 x 15	fest	67590
P75FR	75	Ø75 x 45	fest	61264
P75M	75	75 x 75 x 48	beweglich	69098

Technical Data	Length	No.
Connecting cable 5-PIN, large, M + F	[mm]	
	500	67083
	1000	68992
	1500	70665
	2000	62542
	3000	68374
Power cable 5-Pin, large, F	[mm]	
	3000	52802

