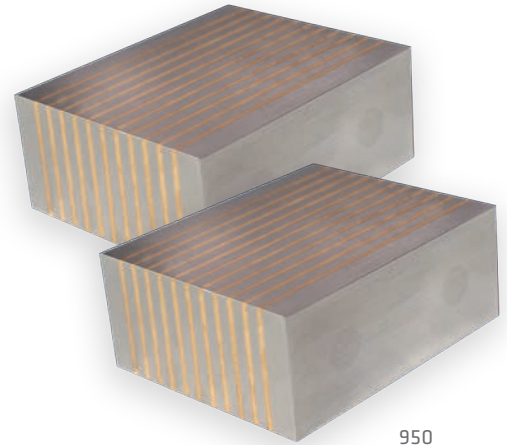


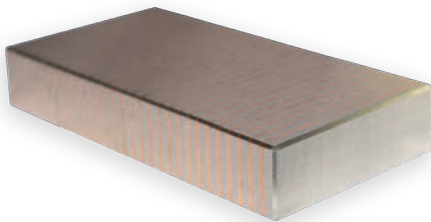
Laminated Support Blocks For Magnetic Chucks

Laminated Support Blocks

The support blocks are mainly used in combination with magnetic bases. The support blocks can be machined for form fit of complex workpieces. The magnetic power is guided through the support block and clamps the workpiece on top. The lamination of the support block must correspond to the magnetic chuck pole pattern.



950



EHT-150



950 v Prisma

Applications

- The magnetic contact area between workpiece and magnetic chuck can be enlarged with non-machined and machined segmented support blocks

Features

- The blocks can be individually adjusted to the work requirements
- Blocks are also available in pairs
- Can be used both horizontally and vertically

Technical data	Dimensions (L x W x H) [mm]	Pole alignment	Item no.	Price [€]
950 (Pair)	60 x 75 x 30	longitudinal	62135	159,00
950 v Prism (Pair)	50 x 100 x 40	longitudinal	62136	165,00
EHT-100	100 x 70 x 40	transverse	66332	350,00
EHT-150	150 x 75 x 25	transverse	64864	200,00
EHT-300	300 x 75 x 25	transverse	66333	400,00
Pole block	Different sizes	longitudinal + transverse		

Prices are subject to change

Other sizes on request