

Accessories suitable for

KKF 4-SL



Chamfer cutters without bore



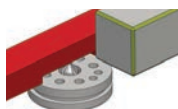
68484



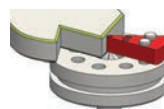
69624



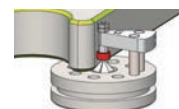
54421



Guide ruler

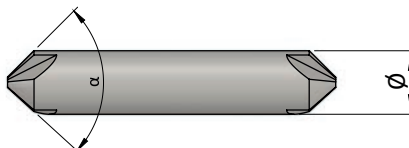


Guide ball bearing



Exchange insert

Field of application	α	\emptyset	S	Z	Coating	FL	fixed or height adjustable [mm]				with guide ball bearing [mm]		No.
							R 0,8	R 1,2	R 1,5	R 2,1	$\emptyset 3$	$\emptyset 4$	
Alu, Steel	90°	10	10	3	No	X	X	X	X	X	X	X	68484
Steel	30°	10	10	4	Yes	X	X	X	X	X	X	X	69624
Steel	60°	10	10	4	Yes	X	X	X	X	X	X	X	69620
Steel	90°	10	10	4	Yes	X	X	X	X	X	X	X	38985
Steel	90°	12	12	6	Yes	X	-	-	-	-	-	-	54420
Steel	60°	12	12	6	Yes	X	-	-	-	-	-	-	54421
Steel	120°	12	12	6	Yes	X	-	-	-	-	-	-	60238



Chamfer cutters with fixed guide pin



Field of application	α	\emptyset	S	Z	Coating	\emptyset Guide pin	No.
Alu, Plastic, Steel	90°	12	12	3	No	2	30654



Accessories suitable for

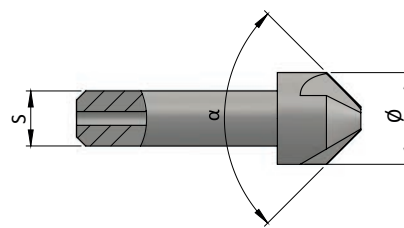
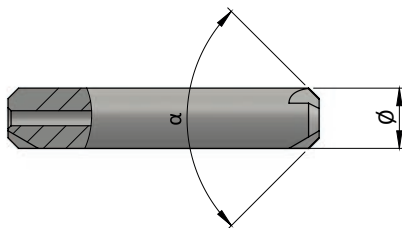
KKF 4-SL



Chamfer cutters with bore



Field of application	α	\emptyset	S	Z	Coating	FK 6	FK 8	No.
Alu	90°	12	12	3	Nein	X	X	65145
Steel	90°	12	12	4	Ja	X	X	65146
Stainless steel	90°	12	12	4	Ja	X	X	65147
Stainless steel	30°	12	12	5	Ja	X	X	64861
Stainless steel	60°	12	12	5	Ja	X	X	70428
Stainless steel	150°	12	12	5	Ja	X	X	67939
Stainless steel	140°	12	12	5	Ja	X	X	60140
Stainless steel	134°	12	12	5	Ja	X	X	60141
Stainless steel	120°	16	12	5	Ja	X	X	60239



Accessories suitable for

KKF 4-SL



Radius cutters with bore



61896



70504



69826



69820

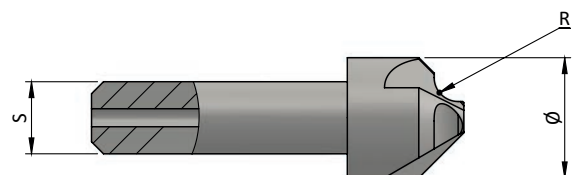


FK 6



FK 8

Field of application	α	\emptyset	S	Z	Coating	FK 6	FK 8	No.
Alu	2,0	12	12	3	No	X	-	13283
Alu	2,5	12	12	3	No	X	-	46235
Alu	3,0	12	12	3	No	X	-	61896
Alu	4,0	16	12	3	No	X	-	70503
Alu	5,0	16	12	3	No	X	-	70504
Steel	0,5	12	12	6	Yes	X	-	71034
Steel	1,0	12	12	6	Yes	X	-	69824
Steel	1,5	12	12	6	Yes	X	-	69825
Steel	2,0	12	12	6	Yes	X	-	69826
Steel	2,5	12	12	6	Yes	X	-	69827
Steel	3,0	12	12	6	Yes	X	-	69828
Stainless steel	0,5	12	12	5	Yes	X	-	71033
Stainless steel	1,0	12	12	5	Yes	X	-	69819
Stainless steel	1,5	12	12	5	Yes	X	-	69820
Stainless steel	2,0	12	12	5	Yes	X	-	69821
Stainless steel	2,5	12	12	5	Yes	X	-	69822
Stainless steel	3,0	12	12	5	Ja	X	-	69823



Accessories suitable for

KKF 4-SL



Flush milling cutter with bore



29112

Field of application	α	\emptyset	S	Z	Coating	FK 6	FK 8	No.
Alu, Plastic, Steel	0°	8	8	4	Yes	-	X	29112



Prism cutters with prisamtic guide



48786



57554

Field of application	α	\emptyset	S	Z	Coating	No.
Steel	180°	10	10	4	Yes	48786
Alu	180°	10	10	3	No	34476
Stainless steel	180°	10	10	4	Yes	57554

Guide ball bearings



65149



65150

Field of application	Details	No.
Guide ball bearing	\emptyset 6,0 mm	65149
Guide ball bearing	\emptyset 8,0 mm	65150

Accessories suitable for

KKF 4-SL



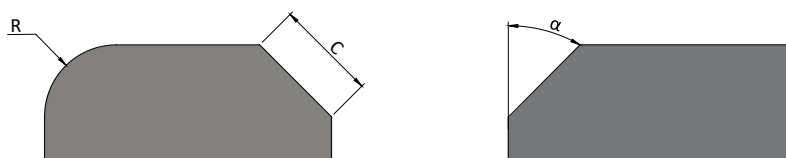
Chamfer cutter head with small guide roller



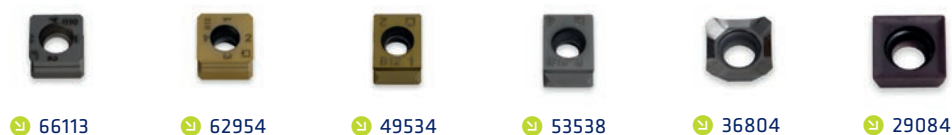
Chamfer cutter head

Guide roller

α	teeth	for insert	C [mm]	No.	\emptyset	No.
45°	1	SX	5,0	69777	12,35	70631
		M	7,0		10,00	70626
45°	3	SX	8,0	71704	21,69	66110
45°	2	X.9	8,0	51933	16,00	62777



Chamfer inserts



	Einsatzgebiet	Details	Artikel-Nr.
SX	Alu, Plastic	SX-B10, C = 7, Cutting edges = 8	66113
	Steel, Stainless steel	SX-B12, C = 7, Cutting edges = 8	62954
M	Alu, Plastic	M-B10, C = 11, Cutting edges = 4	53539
	Steel, Stainless steel	M-B12, C = 11, Cutting edges = 4	49354
	High-strength steel	M-B15, C = 11, Cutting edges = 4	53538
X.9	Alu, Plastic	X.9 Alu polished, C = 7, Cutting edges = 4	36804
	Steel, Stainless steel	X.9 Cermet, C = 7, Cutting edges = 4	29084
	Stainless steel	X.9 SP4019, C = 7, Cutting edges = 4	25531

* ATTENTION: Radius cutter head, guide roller and radius insert must fit together.

Accessories suitable for

KKF 4-SL



Radius cutter heads with small guide roller



69777



71704



70631



70626



66112



66110

Radius cutter heads

R [mm]	teeth	for insert	No.
1,2	1	SX	69777
2,0	1	M	
2,5	1	SX	
3,0	1	M	
1,2	3	SX	71704
2,5	3		

Guide roller

Ø	No.
12,35	70631
18,72	70630
10,94	69864
18,40	69865
14,23	70628
10,00	70626
17,65	70627
19,80	66111
26,10	66112
21,69	66110

Radius inserts



66108



62955



54006



54118

	Einsatzgebiet	Details	Artikel-Nr.
SX	Alu, Plastic	R = 1,2, SXR1,2-B10, Cutting edges = 16	66108
	Steel, Stainless steel	R = 1,2, SXR1,2-B12, Cutting edges = 16	66106
	Alu, Plastic	R = 2,5, SXR2,5-B10, Cutting edges = 8	66107
	Steel, Stainless steel	R = 2,5, SXR2,5-B12, Cutting edges = 8	62955
M	Alu, Plastic	R = 2,0, MR2-B10, Cutting edges = 8	54121
	Steel, Stainless steel	R = 2,0, MR2-B12, Cutting edges = 8	54006
	High-strength steel	R = 2,0, MR2-B15, Cutting edges = 8	54120
	Alu, Plastic	R = 3,0, MR3-B10, Cutting edges = 8	54119
	Steel, Stainless steel	R = 3,0, MR3-B12, Cutting edges = 8	53063
	High-strength steel	R = 3,0, MR3-B15, Cutting edges = 8	54118

* ATTENTION: Radius cutter head, guide roller and radius insert must fit together.

Accessories suitable for

KKF 4-SL



Accessories



Description	Details	No.
Stop ruler	longitudinal	70513
Stop ruler	crosswise	70077
Table top	made of plastic	70457
Prismatic guide	500 mm, for prism cutters Ø 10 mm	60427
Undercarriage	mobile	15578
Wet/Dry vacuum cleaner	AERO 21-21 PC	55611
Adapter suction socket	Alu, for AERO 21-21 PC	49630
Wet/Dry vacuum cleaner - brushless	ATTIX 50-21 PC	66601
Adapter suction socket	Alu, for ATTIX 50-21 PC	58716
Guide finger height-adjustable	Bore Ø 12 mm, R0,8 mm, R1,2 mm, R1,5 mm, R2,1 mm	44069
Insert ring	to guide finger	72019
Insert ring	Bore Ø 8 mm	60505
Insert ring	Bore Ø 12 mm	60504
Insert ring	Bore Ø 18 mm	60503
Insert ring	Bore Ø 33 mm	60502
Collect wrench	ER20	64451
Socket wrench	Wrench size 5,0mm	68438
Open-ended wrench	Wrench size 5,0mm	68515
Tool box	for cutters and accessories	68894
Jokisch Solis Pina V4B wax pencil	for edge milling of SS/ MS, 300 g	70516
Screw grease	tube with 14g	32202

Spare parts



Description	Details	No.
Screw	for insert SX	68411
Screw	for insert X.9	45148
Circlip	Ø 8 x 0,8 mm for cutter head X.9	58842
Collet	Ø 6 mm	51628
Collet	Ø 8 mm	53826
Collet	Ø 10 mm	59392
Collet	Ø 12 mm	39150