

Accessories suitable for

Speedy Kontur 270-K | 270-KSL | 320-K | 320-KSL



Chamfer cutters without bore



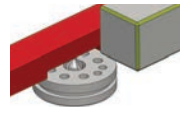
10372



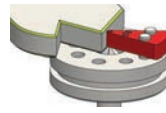
11134



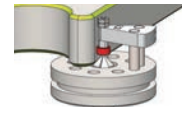
10378



Guide ruler



Guide ball bearing



Exchange insert

Field of application	α	\emptyset	S	Z	Coating	FL	fixed or height adjustable [mm]				with guide ball bearing [mm]		No.
							R 0,8	R 1,2	R 1,5	R 2,1	$\emptyset 3$	$\emptyset 4$	
Alu, Steel	90°	6	6	3	No	X	X	X	X	X	X	X	10372
Alu, Steel	90°	6	6	3	No	X	X	X	X	X	X	X	70309
Alu, Steel	60°	6	6	3	No	X	X	X	X	X	X	X	26208
Alu, Steel	120°	6	6	3	No	X	-	X	X	X	X	X	39954
Alu	90°	6	6	3	No	X	X	X	X	X	X	X	10377
Steel	90°	6	6	5	Yes	X	X	X	X	X	X	X	70308
Steel	90°	6	6	5	Yes	X	X	X	X	X	X	X	11134
Stainless steel	90°	6	6	5	Yes	X	X	X	X	X	X	X	10378



Chamfer cutters with fixed guide pin



10948

Field of application	α	\emptyset	S	Z	Coating	\emptyset Guide pin	No.
Alu, Steel	90°	6	6	3	Nein	2	10948



* Explanation of the abbreviations: α = point angel, R = radius, S = shaft diameter, Z = teeth, FL = guide ruler, FK = guide ball bearing, FZ = guide pin

Accessories suitable for

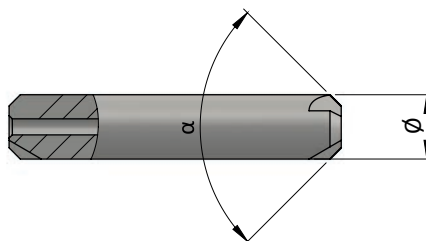
Speedy Kontur 270-K | 270-KSL | 320-K | 320-KSL



Chamfer cutters with bore



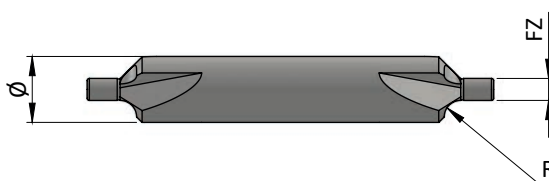
Field of application	α	\emptyset	S	Z	Coating	FZ 2,6	FK 3	FK 4	FK 5	FK 6	No.
Alu, Steel	90°	6	6	3	No	X	X	X	X	-	10374
Alu	90°	6	6	3	No	-	-	X	X	-	10375
Steel	90°	6	6	5	Yes	-	-	X	X	-	39041
Stainless steel	90°	6	6	5	Yes	-	-	X	X	-	43252
Laser-edge	90°	6	6	20	Yes	-	-	X	X	-	41885



Radius cutters with fixed guide pin



Field of application	R	\emptyset	S	Z	Coating	\emptyset Guide pin	No.
Alu, Steel, Plastic	1,0	6	6	3	No	2	37227
Alu, Steel, Plastic	1,5	6	6	3	No	2	10382



* Explanation of the abbreviations: α = point angle, R = radius, S = shaft diameter, Z = teeth, FL = guide ruler, FK = guide ball bearing, FZ = guide pin

Accessories suitable for

Speedy Kontur 270-K | 270-KSL | 320-K | 320-KSL



Radius cutters with bore



Field of application	R	Ø	S	Z	Coating	FZ 2,6	FK 3	FK 4	FK 5	FK 6	No.
Alu	0,5	6	6	3	No	-	X	-	-	-	31361
Alu	1,0	6	6	3	No	-	X	-	-	-	67584
Alu	1,5	6	6	3	No	-	X	-	-	-	67585
Steel	0,5	6	6	5	Yes	-	X	-	-	-	31363
Steel	1,0	6	6	5	Yes	-	X	-	-	-	29239
Steel	1,5	6	6	5	Yes	-	X	-	-	-	67586
Stainless steel	0,5	6	6	6	Yes	-	-	X	-	-	43212
Stainless steel	1,0	6	6	5	Yes	-	X	-	-	-	17517
Stainless steel	1,5	6	6	5	Yes	-	X	-	-	-	21383



* Explanation of the abbreviations: α = point angel, R = radius, S = shaft diameter, Z = teeth, FL = guide ruler, FK = guide ball bearing, FZ = guide pin

Accessories suitable for

Speedy Kontur 270-K | 270-KSL | 320-K | 320-KSL



Flush milling cutter with bore



Field of application	α	\emptyset	S	Z	Coating	FZ 2,6	FK 3	FK 4	FK 5	FK 6	No.
Alu, Steel	0°	5	6	4	No	-	-	-	X	-	17528
Alu, Steel	0°	6	6	4	No	-	-	-	-	X	17526

Prism cutters for prismatic guide and slug remover



Field of application	α	\emptyset	S	Z	Coating	No.
Alu, Steel	180°	6	6	3	No	17516
Steel, Stainless steel	180°	6	6	3	Yes	53675

Guide pin and guide ball bearings



Description	Details	No.
Guide pin	\emptyset 2,6 mm	71002
Guide ball bearing	\emptyset 3,0 mm	71003
Guide ball bearing	\emptyset 4,0 mm	71004
Guide ball bearing	\emptyset 5,0 mm	71005
Guide ball bearing	\emptyset 6,0 mm	71006

* Explanation of the abbreviations: α = point angel, R = radius, S = shaft diameter, Z = teeth, FL = guide ruler, FK = guide ball bearing, FZ = guide pin

Accessories suitable for

Speedy Kontur 270-K | 270-KSL | 320-K | 320-KSL



Accessories



27058



47383



52833



47384



46174

Speedy Kontur 270



46173

Speedy Kontur 320



50005



983



39812

Description	Details	No.
Guide finger	bore Ø 8 mm, R0,8 mm, fixed	10407
Guide finger	bore Ø 8 mm, R1,2 mm, fixed	47383
Guide finger	bore Ø 8 mm, R1,5 mm, fixed	52833
Guide finger	bore Ø 8 mm, R2,1 mm, fixed	47384
Guide finger height-adjustable	bore Ø 12 mm, R0,8 mm, R1,2 mm, R1,5 mm, R2,1 mm	44069
Insert ring	bore Ø 8 mm	46174
Insert ring	bore Ø 11 mm	46173
Slug remover	max. Ø 3 mm	38214
Wet/dry vacuum cleaner	ATTIX33-2L IC	65857
Exhaust device	for Speedy Kontur 270	50005
Prismatic guide	for Speedy Kontur 270	983
Guide ruler	for Speedy Kontur 270	39812
Exhaust device	for Speedy Kontur 320	57085
Prismatic guide	for Speedy Kontur 320	984
Guide ruler	for Speedy Kontur 320	10997

Spare parts



70291



67705



67703



70291 +
29240

Description	Details	No.
Insert ring	bore Ø 12mm	70291
Exchange insert	R0,8 for height-adjustable guide finger	69692
Exchange insert	R1,2 for height-adjustable guide finger	67704
Exchange insert	R1,5 for height-adjustable guide finger	67705
Exchange insert	R2,1 for height-adjustable guide finger	67706
Exchange insert	with FK 3 for height-adjustable guide finger	29240
Exchange insert	with FK 4 for height-adjustable guide finger	67703
Drive belt		51239